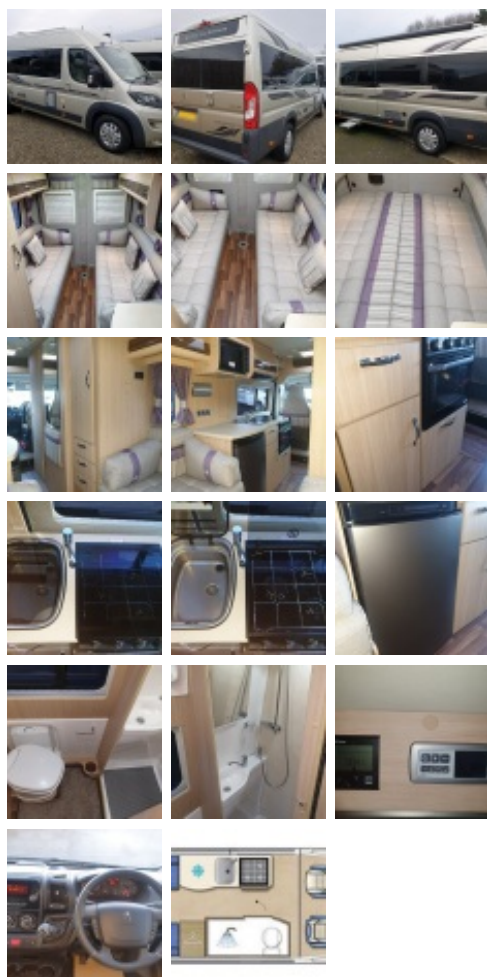


### Auto-Sleepers Warwick XL



Sale Item was ~~£47,995~~, Now:- **£Sold**

Year:	<b>2017</b>
Number of Berths:	<b>2</b>
Engine Size:	<b>2.0 Litre BlueHDi 160bhp</b>
Fuel Type:	<b>Diesel</b>
Width:	<b>2.26 Metres</b>
Height:	<b>2.64 Metres</b>
Length:	<b>6.36 Metres</b>
Gross Weight:	<b>3500 kgs</b>

'67 reg, 2017 specification

2.0ltr 160bhp Boxer based

Rear lounge, 2 berth van conversion

Under 11,000 miles

Superb, one-owner motorhome. Based on the Peugeot XLWB 3500kg chassis, the Warwick XL comprises large rear lounge, well-appointed kitchen and a washroom with a separate shower..

#### Main features

- ➡ Boxer 2.0ltr 160bhp Euro 6 engine
- ➡ 6 speed manual gearbox
- ➡ 'Golden White' paintwork
- ➡ 'Verada Oak' furniture
- ➡ 'Catalan Berry' upholstery
- ➡ Peugeot integrated DAB radio
- ➡ Steering wheel audio controls
- ➡ Integral LED daylight running lights
- ➡ Electric/heated cab mirrors
- ➡ Electric cab windows
- ➡ Underslung spare wheel and tyre
- ➡ 25ltr underslung LPG gas tank
- ➡ Electric slide-out habitation step
- ➡ External TV socket
- ➡ LED strip awning light
- ➡ Truma CP Plus
- ➡ Truma iNet ready
- ➡ Hal Locate Cat6 tracker \*

\* (requires customer re-activation - fees apply)

#### Exterior sockets (including)

- ➡ TV aerial
- ➡ Whale water filler
- ➡ Manual water filler
- ➡ External BBQ socket
- ➡ Mains hookup connector

#### Kitchen (comprising)

- ➡ Oven/grill
- ➡ Microwave
- ➡ 3-burner gas hob
- ➡ 3-way fridge with freezer
- ➡ 12V extractor fan with downlighters
- ➡ Sink

#### Washroom (comprising)

- ➡ Electric flush cassette toilet
- ➡ Separate shower cubicle
- ➡ Vanity sink

#### Premium Pack Upgrade (comprising)

- ➡ Alloy Wheels
- ➡ Cruise control
- ➡ Cab air conditioning
- ➡ Thule (Omnistor) canopy awning
- ➡ Colour reversing camera & Garmin Sat Nav
- ➡ Leather steering wheel & gear knob
- ➡ AL-KO air top suspension
- ➡ 80W solar panel

#### Winter Pack (comprising)

- ➡ Fresh & waste water tank heater blanket
- ➡ Concertina cab blinds (in lieu of cab curtains)
- ➡ Truma Combi E heater upgrade
- ➡ Wheel arch insulation blankets
- ➡ **10,870 miles**